



DISCOVER THE ILLUSION OF
WORDS, STORIES, AND IDENTITIES.

MAKE UP YOUR
STAR
OWN STORIES
LEADER
TO IMPRESS OTHERS
SHAMAN

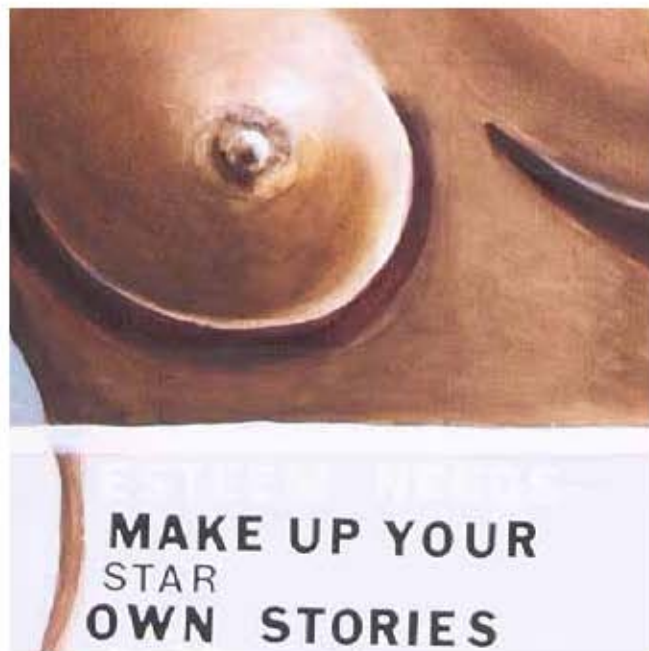
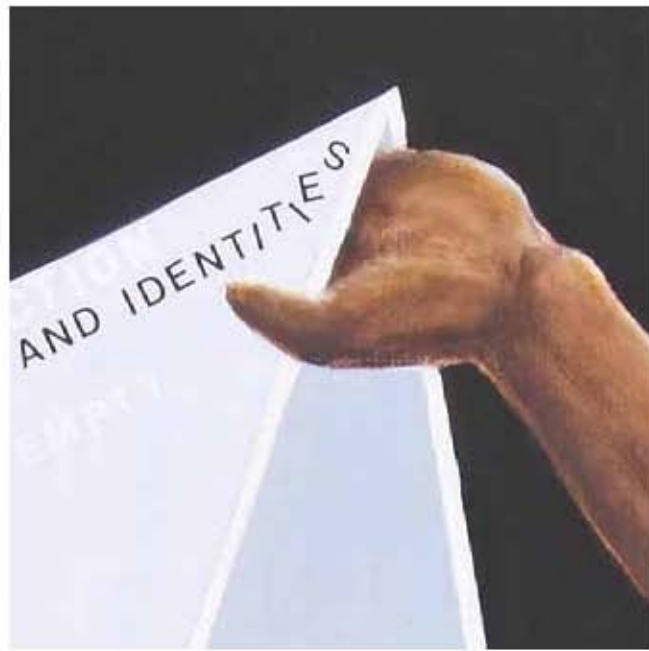
GROUP
TELL EACH OTHER STORIES

LEARN WORDS AND BELIEVE IN STORIES

MANMADE WORDWORLD

REAL WORLD

PHYSIOLOGICAL NEEDS: AIR, FOOD, SLEEP, WARMTH, SHELTER, SEX, ETC.



The pyramid of Maslow is empty

150 x 100 x 4 cm
oil and synthetic lettering on canvas